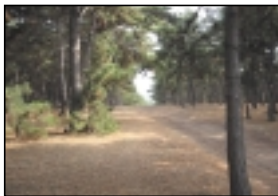


Chinese Vasaloppet

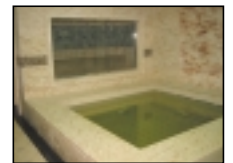


COURSE

Pictured left are Course Planners Weine Fredriksson and Anders Robertson of Sweden as they inspect the Start area. The photo above shows a panorama of the start where the skiers will come up the hill and then swing to the left. The course map and the profile (on the other side of the paper) give an indication of what awaits the participants. The photos on the right show the race terrain in its Autumn colours.



ACCOMODATION
 Double room on 4-star hotel in Changchun.
 15 minutes away from the start area.
 Banquet halls which invites to social intercourse.
 Sauna.



Class	Ski style	Start	Entry
43 km Open	Classic	08.30	USD 80
26 km Tourist	Classic	12.00	USD 50
4 km Intro	Classic	14.00	USD 20

Entry
 Your entry should be sent to Pelikan Reisen GmbH stating the information as per the Entry Form below. This can be sent by post, fax or e-mail. Your entry will be registered when the payment has been received (see the Travel Information).

Entry limit
 The Chinese organizers have set an entry limit of 3,000, of which 500 places have been reserved for non-Chinese participants.

Prize money for the 43 km race (in Euros):

Men	1st:	5,000	Women	1st:	1,500
	2nd:	2,000		2nd:	1,000
	3rd:	1,500		3rd:	500
	4th:	1,000			
	5th:	500			

Information
 Participants will receive detailed information about the procedure for applying for a Chinese visa.

Vaccination
 This is not required for visits to Beijing or Changchun.

Seeding
 If you believe that you qualify for a seeded start position, you should state this on the entry form together with your qualifying results from similar long-distance ski races which you wish to be taken into account.

Further information
 For additional information or any questions please contact:
 Pelikan Reisen GmbH Tel: +43 - (0)2622 - 83463
 Bahngasse 4 Fax: +43 - (0)2622 - 83463 - 20
 A - 2700 Wiener Neustadt E-mail: pelican@utanet.at
 Austria Web site: www.pwt-europa.com

ENTRY FORM

Chinese Vasaloppet

Name: _____

Address: _____

Home telephone: _____ Business telephone: _____

Mobile phone: _____ E-mail: _____

I wish to enter as follows:

- Travel alternative 1, 9-17/3 Travel alternative 2, 8-16/3
 43 km Open 26 km Tourist 4 km Intro

Previous long-distance ski race results (if seeding is required): _____

Please send this form by post, fax or e-mail.